

STANDALONE INVERTER SYSTEM

POWER 500 VA / 800 VA / 1500 VA
INPUT 48 Vdc
OUTPUT 230 Vac

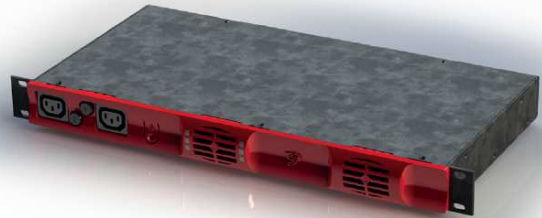


Illustration photo

Description

Y-ONE is a compact inverter providing a pure sine wave AC supply. In conjunction with a DC Power system, it provides an excellent AC backup solution. It uses the latest inverter technology, providing superior energy efficiency in a compact size.

The "Twin Sine Innovation" (TSI) technology provides high efficiency of up to 92% reducing operating costs.

Model available in rear terminal AC output or front 2XIEC socket protected by fuse. The available models present either a rear connected bulk AC outlet or 2 front connected IEC output. See pictures.

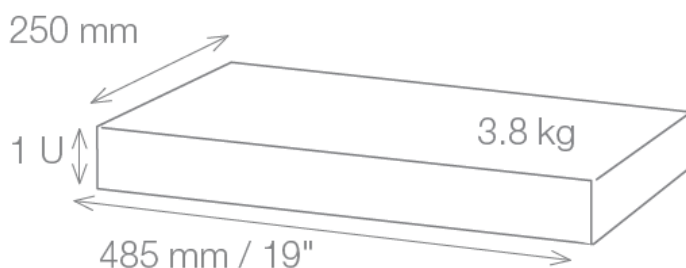
Optional Manual By-Pass available for easy Y-One module swapping.

General Features

- Dual input sources (AC & DC) with wide AC input range 150 Vac to 265 Vac
- By-Pass function embedded
- Compact design
- High efficiency
- Transfer time AC to DC and DC to AC reduced to 0 ms
- Short depth allows 300 mm rack integration

Application

All business critical applications and all types of AC loads. The design is cost effective, installation easy.



Technical specifications

General	EPC-500 (48V/230)	EPC-800 (48V/230)	EPC-1500 (48V/230)
EMC – immunity	EN 61000-4-2 up to 6		
EMC – emission (class)	EM 55022 (A)		
Safety	IEC 60950-1- EN62040-1-1		
Cooling / Isolation	Forced / Doubled		
MTBF	240 000 hrs		
Efficiency: Enhanced power conversion / on-line	92% / 89%		94% / 90%
Dielectric strength DC/AC	4300 V DC		
True Redundant Systems - compliant	3 disconnection levels on ACout and DCin power ports		
	4 disconnection levels on AC in port		
RoHS	Compliant		
Vibration	GR63 office vibration 0 to 100 Hz-0.1 g / transport vibration 5-100 Hz 0.5 g 100 to 500 Hz-1.5 g / Drop test		
Operating conditions	Designed for installation in an IP20 or IP21 environment. When installed in a dusty or corrosive environment, appropriate measures (air filtering ...) must be taken.		
Altitude above sea without de-rating	< 1500 m / derating > 1500 m – 0.8 % per 100 m		
Ambient / storage temperature	-20 to 50 °C / -40 to 70 °C		
Relative humidity	95 %, non-condensing		
Material (casing)	Coated steel		
AC output power			
Nominal Output power (VA) / (W)	500 / 400	800 / 640	1500 / 1200
Short time overload capacity	150 % (15 seconds) 110 % permanent within T° range		
Admissible load power factor	0 lagging to 0 leading		
DC input specification			
Nominal voltage (DC)	48 V		
Voltage range (DC)	40 - 60 V		
Nominal current (at 40 V and 400W (Y-one 500)/640 W (Y-one 800)/1200 W (Y-One 1500))	11,2 A	18 A	33 A
Maximum input current (for 15 second) / voltage ripple	17 A / 2mV PSO	27 A / 2 mV PSO	50 A / 2 mV PSO
Input voltage boundaries	N/A		
AC input specification			
Nominal voltage (AC)	230 V		
Voltage range (AC)	150-265 V		
Brownout	150 to 185 V linear derating		
	400 VA @ 150 Vac	640 VA @ 150 Vac	1200 VA @ 150 Vac
Conformity range before transfer to DC	Adjustable		
Power factor	> 99%		
Frequency range (selectable) / synchron. range	50 – 60 Hz / range 47 – 53 Hz / 57 – 63 Hz		
AC output specification			
Nominal voltage (AC*)	230 V		
Frequency / frequency accuracy	50 or 60 Hz / ±0.01 %		
Total harmonic distortion (resistive load)	< 1.5 %		
Load impact recovery time	0.4 ms		
Turn on delay	20 s		
Nom. current. Protected against reverse current	2,2 A	3,5 A	6,5 A
Crest factor at nominal power	2.8 : 1		
With short circuit management and protection			
Short circuit clear up capacity	10 x I _n for 20 msec - Available while Mains is available at AC input port With magnitude control and management		
Short circuit current after clear up capacity	2.1 I _n during 15 s and 1.5 I _n after 15 s		
TRANSFER TIME PERFORMANCE AC to DC and DC to AC			
Max. voltage interruption / total transient voltage duration (max)	0 ms / 0 ms		
Signaling & Supervision			
Display	Synoptic LED on front of the module		
Alarms output / supervision	Dry contact on shelf at the rear of the module		
Remote on / off	On rear terminal of the module		

(*)Operation within lower voltage networks leads to de-rating of power performances

A2B, s.r.o. reserves the right to change any specifications without prior notice. (73-000022-01)